

PO Box 193 • 6482 Main Street Westport, NY 12993  
518 962 2287  
info@champlainareatrails.com  
www.champlainareatrails.com

---

## Essex Quarry Nature Preserve

Thanks to Terry Dinnan and Marty Illick and many generous donors, Champlain Area Trails (CATS) purchased Essex Quarry on December 26, 2019 to create a nature preserve that protects its natural, geological, paleontological, and historical features and provide hiking/skiing trails for people to enjoy year-round.

On June 26, 2021, CATS formally opened the preserve. People begin their hikes at a kiosk with an informative panel that provides a short history of the quarry and a map showing these four color-coded trails:

- The Bluestone Trail (blue markers) takes you to and circles the quarry.
- The Red Trail is a woodland loop trail beginning on the west side of the quarry. It leads to and then makes a circle which takes you back to the Bluestone Trail or you can branch off it and get on the...
- Green Trail, which leads through forest to and along the northern property line where you'll look out over farmland and end up back on the Bluestone Trail.
- The Yellow Trail is a short loop trail that spurs off the Green Trail. It goes through forest and along an old stone wall.

Essex Quarry is on Lakeshore Road in the Town of Essex, ½ mile south of the blinking light at the intersection of Route 22 and Lakeshore Road.

### Directions to Essex Quarry Nature Preserve:

A preferred way to get to the Quarry is to park at the parking lot cross from the NY-VT Ferry (just north of the blinking light). From there you take the "Bluestone Trail" through Essex to the Quarry. You'll walk by historic and architecturally significant buildings, many with Essex Quarry stones in them. From the parking lot, walk south on Lakeshore Road for a half-mile to the Preserve which will be on your right.

To park at Essex Quarry, from the intersection of Route 22 and Lakeshore Road, go south on Lakeshore Road for ½ mile to the preserve which will be on your right. Pull into the driveway and park in the parking lot.

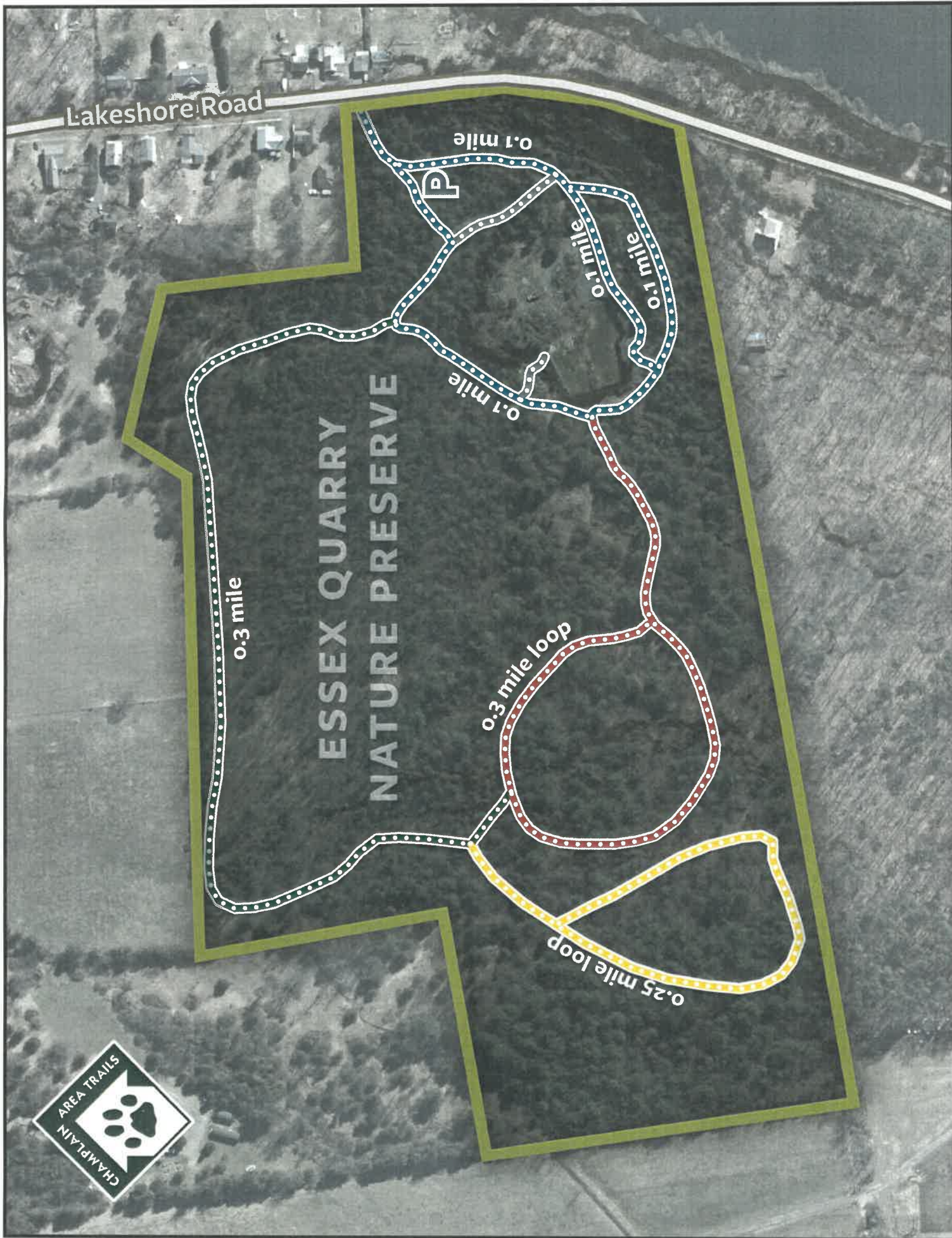
## Historic Bluestone in Essex, New York

- 1 Greystone Mansion, c. 1853
- 2 Belden Noble Memorial Library, c. 1815
- 3 Harlan Hall, 1810
- 4 W.D. Ross Store, c. 1810
- 5 Essex Firehouse (former), c. 1800
- 6 Essex Community United Methodist Church, 1853
- 7 Methodist Episcopal Church, 1835
- 8 Dr. Samuel Shumway House, 1832
- 9 John Gould Mansion, 1833
- 10 Billings Stone Cottage, 1828
- 11 Essex Quarry

Source: Morris Glen







Lakeshore Road

ESSEX QUARRY  
NATURE PRESERVE

0.3 mile

0.1 mile

0.1 mile  
0.1 mile

0.1 mile

0.3 mile loop

0.25 mile loop

